

Augment Digital Core with a Digital Edge

Shatter digital silos with PolarisEdge- a platform that delivers on the promise of Connected Enterprise



 **polarisedge**

www.edgeverve.com

Transform Silos into Synergy

Companies pour billions into digital transformation efforts that often fail to deliver the expected value. Enterprise silos, sub-optimal tech investments, and a complex web of legacy point solutions are at the root of this problem. Moreover, we are currently in the AI-first era, making the traditional piecemeal approach to tech adoption irrelevant. To flourish in this era and evolve into an AI-first business, enterprises must establish a seamless flow of data and information throughout the entire system.

A gradual redemption from detrimental legacy modes calls for a new solution.



PolarisEdge

The AI-powered platform shattering digital silos, to deliver on the promise of Connected Enterprise

PolarisEdge, part of Infosys Topaz, bridges silos in people, processes, data, and technology for enterprises, amplifying the value of their existing digital core investments.

The PolarisEdge platform acts as a transformative overlay, seamlessly integrating with enterprises' existing systems. It enables businesses to adopt cutting-edge capabilities, enhance operational efficiency, and unlock new opportunities for growth and innovation, all without disrupting their foundational systems. Strategically designed to facilitate digital transformation, PolarisEdge enriches the digital core and delivers a truly connected enterprise experience.

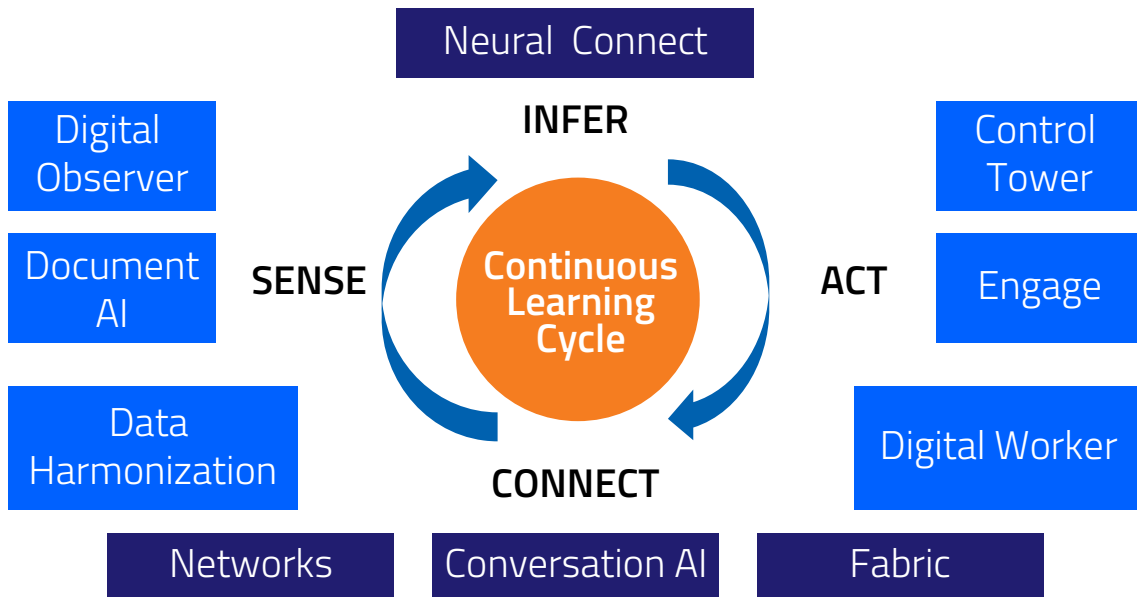
PolarisEdge helps organizations to

Unlock Efficiency at Scale - Redefine operational efficiency by digitizing and automating complex business processes, enabling enterprises to achieve a high degree of Straight Through Processing.

Amplify Human Potential - Drive productivity while enabling enterprises to engage in a more human-centric way with their customers, employees, and partners.

Harness the Power of Connected Ecosystem - Maximize value for end-customers through strategic collaboration and integrated journeys.

Capabilities that Empower



SENSE

Make new data observable, derive insights from unstructured documents and harmonize structured data, making it ready for what unfolds next.



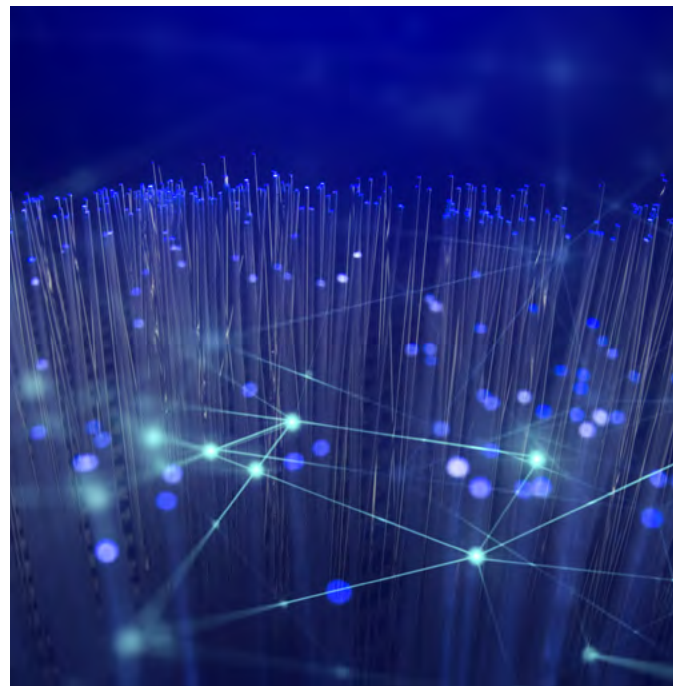
Digital Observer

Offers insights into Human Systems interactions within the context of a business process or journey and makes new data observable. Provides a unique window into employee experience—quantifying their pain points and revealing where they spend their time—providing a clear path to transformation.



Document AI

Transforms documents from static and unstructured data sources into dynamic and intelligent assets that drive smart decision-making and automation. Enables discovery, extraction and consumption of unstructured information spread across decision workflows.



Data Harmonization

Solves data inconsistencies across various systems within the enterprise and across the value chain by enabling the creation of an interoperable ecosystem.

INFER

Build AI models, encapsulate cognitive processes and decision-making patterns, enhancing the capability to perform specialized tasks.



Neural Connect

Democratizes AI; envisions a future where AI capabilities are accessible, adaptable, and responsive to diverse business needs. Augments human interventions with AI-powered suggestions and insights, continuously learns and improves, and provides a catalogue of co-pilots for various business purposes. It also emphasizes responsible AI practices and offers flexibility in LLM model choices.



ACT

Amplify human potential, drive touchless operations, and reimagine customer journeys, enabling transformation at scale.



Engage

Offers user-friendly interfaces, to reimagine business processes and journeys. It embraces a user-friendly approach with both no-code and low-code capabilities, empowering employees at moments of truth.



Digital Worker

Enables businesses to achieve end-to-end workflow automation through advanced automation technologies with AI-driven recommendations. It leverages the power of Neural Connect to drive automation across various complexities.



Control Tower

It provides real-time visibility, customizable dashboards, and proactive alerts and helps organizations take prompt actions, sustain peak efficiency, and safeguard business continuity.

CONNECT

Extend the transformation to endpoints – people, systems, and partners, creating a continuous learning cycle.



Networks

Power the search and discovery of partners, products, services and locations to establish partnerships on peer-to-peer networks – thereby transforming the value chain into value networks.



Conversation AI

Enables contextual, and intelligent interactions by breaking down silos between different departments and information systems. It seeks to enhance the user experience by providing instant access to information, answering queries, and offering personalized support.



Fabric

Combines the transformative capability for Intelligent Integration and orchestration that goes beyond simple data connectivity – offering capabilities for data validation, enrichment, and transformation, thereby ensuring high quality, consumption-ready data for driving interoperability.



Outcome Delivered

Unlock Efficiency at Scale



100,000+ Digital Workers Empowered



10,000+ Processes Automated



13,000+ Types of Documents Processed



5 MN Processed Contracts



Upto **600** Pages Complex Document

Amplify Human Potential



Saved **315,000 Days** of Human Effort or Saved 2.52 million Hours of Human Effort



Healthcare insurer slashed claims processing errors to under **3%**



60% boost in productivity for a telecom major's contract negotiations team, handling 70,000+ contracts per year



70% improvement in employee productivity for F&B company

Harness the Power of Connected Ecosystem



6000+ Distributors



1000+ Retailers



1 Terabyte of Data Processed Everyday



Powering business transactions of **\$200+ billion** per annum



150000+ API Calls

Partner with us to simplify complexity, build agility, and derive value from your digital transformation efforts. Let's pave the way for your digital journey together.

Reach out to us at

Polarisedge@edgeverve.com



About PolarisEdge

PolarisEdge, an AI-powered platform that bridges silos in people, processes, data, and technology for enterprises, amplifying the value of their existing digital core investments. PolarisEdge, which is part of Infosys Topaz, an AI-first set of services, solutions and platforms using generative AI technologies, strategically responds to the evolving needs of modern enterprises. PolarisEdge. Guiding Enterprise through the constellation of Digital Transformation.

EdgeVerve. Possibilities Unlimited.

www.edgeverve.com/polarisedge



About EdgeVerve

EdgeVerve Systems Limited, a wholly-owned subsidiary of Infosys, is a global leader in developing digital platforms, assisting clients to unlock unlimited possibilities in their digital transformation journey. Our purpose is to inspire enterprises with the power of digital platforms, thereby enabling our clients to innovate on business models, drive game-changing efficiency and amplify human potential. Our platforms portfolio across Automation (AssistEdge), Document AI (XtractEdge), and Supply Chain (TradeEdge) helps inspire global enterprises to discover & automate processes, digitize & structure unstructured data and unlock the power of the network by integrating value chain partners. EdgeVerve, with a deep-rooted entrepreneurial culture, our innovations are helping global corporations across financial services, insurance, retail, consumer & packaged goods, life sciences, manufacturing telecom and utilities, and more.

EdgeVerve. Possibilities Unlimited.

www.edgeverve.com